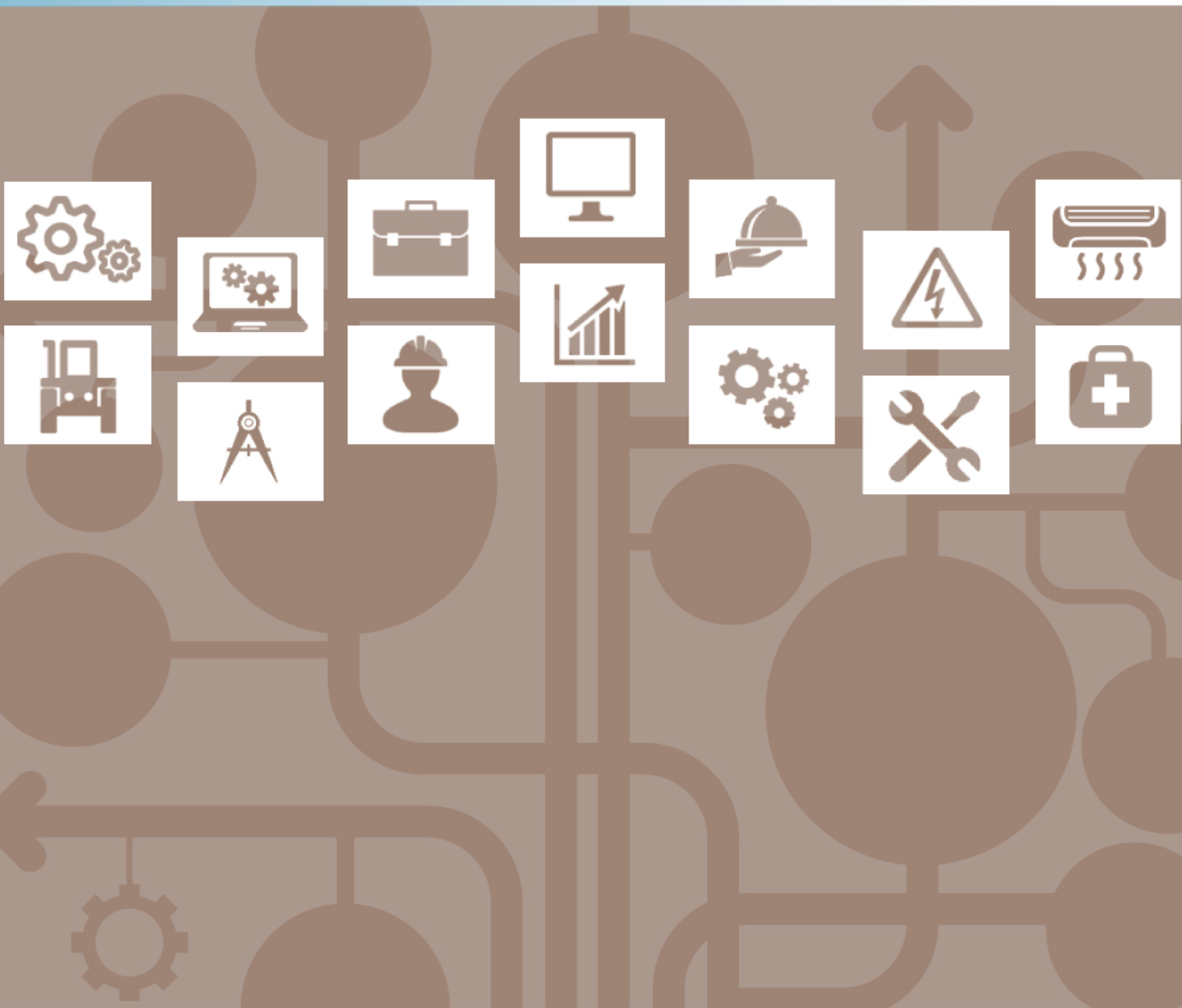




Entry Level Assessment Blueprint

Interior Decorating and Design



Test Code: 1032 / Version: 01

Specific Competencies and Skills Tested in this Assessment:

Safety and Environmental Issues

- Follow manufacturer recommendations and other information regarding product use, including storage and disposal of hazardous materials
- Select procedures for reporting and handling accident, safety, and security incidents
- Identify issues involving fire safety, including appropriate use of extinguishers and flame retardant fabrics
- Operate, maintain, and store trade equipment and tools safely



Elements and Principles of Design

- Identify key elements and principles of design
- Model the application of design elements and principles in interior design
- Interpret color elements and how color impacts design
- Describe the psychological effects of color
- Differentiate between hue, value, and intensity

Textiles, Fibers, and Fabrics

- Assess the elements and principles of design utilized in textile products
- Demonstrate an understanding of the history of fibers and fabrics
- Identify characteristics of fabrics with various yarn constructions
- Evaluate fabric finishes and color application methods for specific interior purposes
- Select appropriate fibers and fabrics for specific end users
- Interpret labeling information to determine care procedures for various fabrics



Specific Competencies and Skills continued:

Interior Materials and Products

- Evaluate floor coverings and wall and window treatments
- Compare and contrast the characteristics of various fixtures, materials, equipment, and surfaces in kitchen and bath design
- Integrate guidelines in selecting appropriate lighting considering safety, function, and design
- Assess the environmental impact of interior materials and products



Furnishings and Accessories

- Evaluate upholstered furniture and explain criteria for assessing quality
- Describe factors to be considered when coordinating furniture and accessories
- Compare function, aesthetics, and durability of home furnishings
- Compare function, efficiency, and durability of home appliances
- Appraise space and functional requirements for equipment and furnishings

Art Periods and Design Styles

- Compare art periods and their influence on design styles
- Identify cultural, technological, and economic influences on design styles
- Describe characteristics of different design styles

Visual Presentation

- Demonstrate hand drafting skills for interior design
- Create scale drawings
- Employ computer aided drafting (CAD) for interior design
- Recognize steps in the design process by producing a presentation board

Specific Competencies and Skills continued:

Technical Knowledge

- Research and compile appropriate information sources regarding interior design/graphic standards
- Perform measuring and layout skills
- Demonstrate estimating, ordering, purchasing, and pricing skills

Retail Operation Procedures

- Apply concepts of retail management
- Communicate receiving, inspection, and inventory procedures
- Express appropriate customer service skills
- Evaluate billing procedures and fee structures
- Demonstrate various selling techniques
- Model design consultation skills
- Identify professional and youth organizations, certifications, and career options in the Interior Decorating and Design field



Marketing Skills

- Identify and evaluate effective marketing procedures
- Create visual merchandising and anticipate its impact
- Determine the role and effectiveness of advertising
- Evaluate promotional activities used to market products and services
- Utilize ethical and legal behavior in marketing

Housing Issues

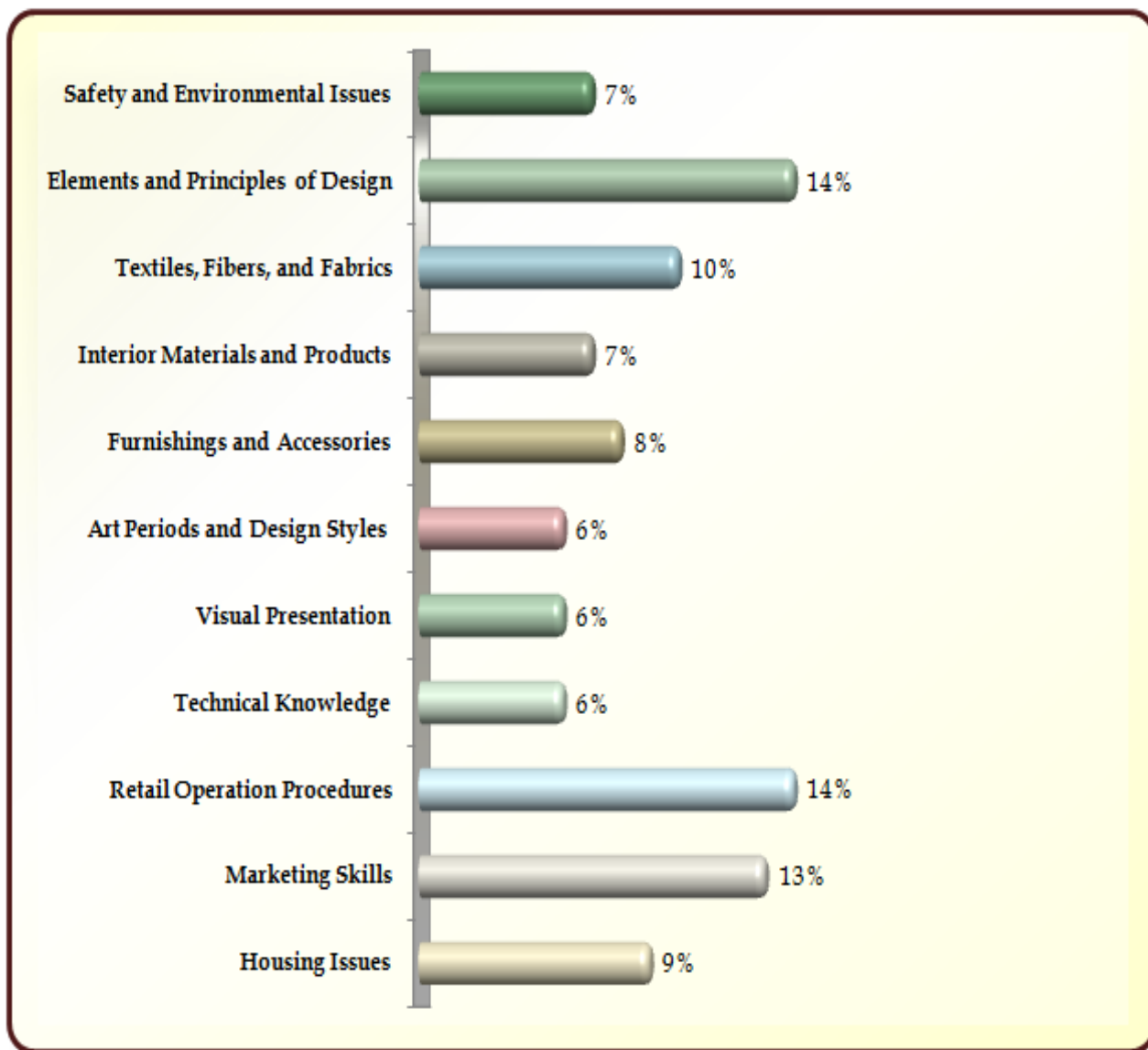
- Determine individual and family needs, goals, and resources
- Examine the landscaping, geographical, and environmental effects on housing
- Support trends in housing, including elements of Universal Design
- Identify various national building and housing codes

Written Assessment:

Administration Time: 3 hours

Number of Questions: 172

Areas Covered:



Sample Questions:

An analogous color scheme uses

- A. colors that are opposite of each other on the color wheel
- B. a primary color from the color wheel with white or black
- C. two or more colors that are next to each other on the color wheel
- D. three colors that are equally distant from each other on the color wheel

Which of the following upholstery covering is the most durable?

- A. jersey knit
- B. microfiber
- C. leather
- D. chenille

Frank Lloyd Wright is associated with which period style?

- A. Arts and Crafts and Mission
- B. Art Deco and Art Nouveau
- C. Roccoco and Baroque
- D. Victorian and Gothic

How many square feet are in one square yard?

- A. 3 square feet
- B. 6 square feet
- C. 9 square feet
- D. 12 square feet

Professionals who make recommendations to home sellers in order to make their homes more appealing to buyers are called

- A. zoning inspectors
- B. design assistants
- C. title agents
- D. home stagers