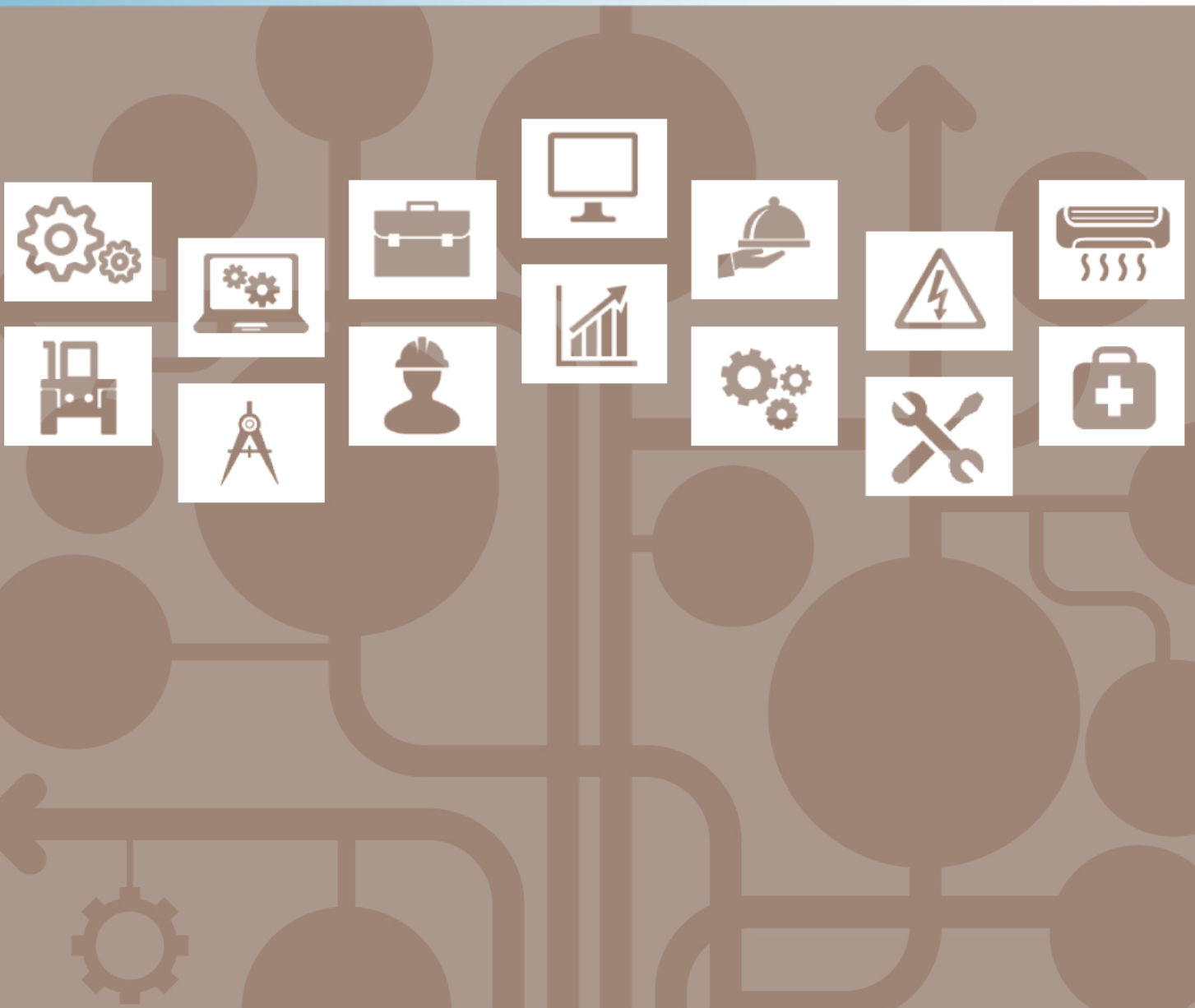


*Pathway Assessment Blueprint*

*Therapeutic Services*



## **Specific Competencies and Skills Tested in this Assessment:**

### **General Health Sciences Technical Skills**

- Apply professional standards when interacting with patients and families
- Identify and interpret medical terminology
- Maintain appropriate infection controls procedures
- Apply knowledge of anatomy and physiology

### **Therapeutic Services Technical Skills**

- Collect, document, and report patient information to develop appropriate therapeutic response (e.g., abnormal vital signs)
- Assist in planning and implementing patient treatment plans
- Observe, monitor, and report patient status and respond appropriately
- Demonstrate proper procedures for positioning, transporting and transferring patients

### **Academic Foundations**

- Apply reading skills in a health science career environment
- Apply writing skills in a health science career environment
- Apply mathematical skills in a health science career environment
- Apply science skills in a health science career environment

### **Systems**

- Describe the relationships, roles, and responsibilities among healthcare professionals
- Analyze the impact on healthcare systems based on changes in technology, epidemiology, managed care, etc.

### **Ethics**

- Apply appropriate laws, regulations, and industry standards to healthcare situations
- Identify ethical issues and demonstrate ethical behavior in healthcare situations

## ***Specific Competencies and Skills continued:***

### **Communications**

- Communicate with patients using appropriate language and level, including using appropriate techniques for communicating with special needs patients (e.g., hard of hearing)
- Apply listening skills and interpret verbal and nonverbal behaviors to enhance communication with coworkers and patients
- Interpret and use tables, charts, and figures to support written and oral communication

### **Information Technology Applications**

- Use word processing, presentation software, and email applications to prepare communication
- Use spreadsheet and database applications to manage and communicate data and information

### **Problem Solving, Critical Thinking, and Decision Making**

- Use problem solving and critical thinking skills to locate credible sources of information about problems and determine appropriate methods for investigating causes
- Use problem solving and critical thinking skills to determine root causes of problems and to suggest and evaluate solutions

### **Leadership and Teamwork**

- Apply leadership qualities to improve the quality of work and the work environment
- Work effectively in a team environment to improve the quality of work and the work environment



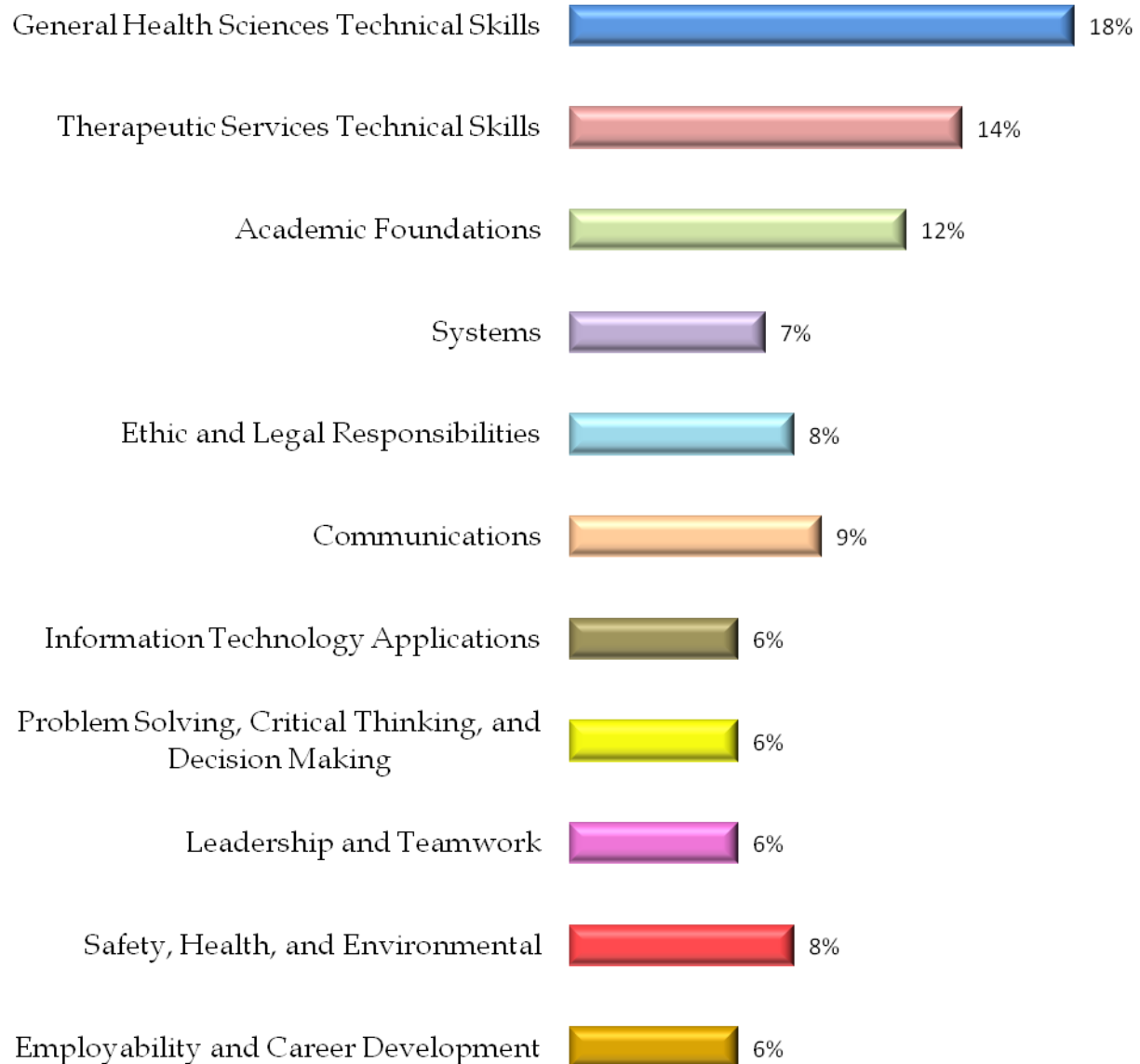
*Specific Competencies and Skills continued:*

**Safety, Health and Environmental**

- Identify and practice appropriate safety and health procedures for healthcare occupations
- Demonstrate appropriate emergency and first aid knowledge and procedures for healthcare occupations
- Identify and practice appropriate environmental procedures for healthcare occupations

**Employability and Career Development**

- Demonstrate appropriate workplace behavior related to a health occupations career
- Develop career readiness skills to advance in health occupations

**Written Assessment:****Administration Time:** 2 hours**Number of Questions:** 101**Areas Covered:**

## Sample Questions:

A patient diagnosed with arthritis may be referred to a

- A. gastrologist
- B. cardiologist
- C. dermatologist
- D. rheumatologist

The organelle of the cell that provides for energy production in the process of cellular respiration is the

- A. nucleolus
- B. Golgi apparatus
- C. mitochondria
- D. lysosome

Urgent Care Centers are designed to

- A. replace hospitals
- B. replace doctor's office visits
- C. decrease emergency room visits
- D. decrease home care visits

Which of the following symptoms is subjective?

- A. vomiting
- B. nausea
- C. skin breakdown
- D. rapid pulse

Which type of medical record is considered most efficient to maintain and retrieve patient information?

- A. electronic chart
- B. paper charts
- C. kardex
- D. care plan

The first step in transferring a patient after checking the care guide is to

- A. introduce yourself to the patient
- B. use a gait belt as indicated
- C. explain the procedure to the patient
- D. use a walker as indicated

## Sample Questions (continued)

When providing two-person CPR, one person is not doing compressions as deeply as required to be effective. The second partner should

- A. switch out, continue compressions, and say nothing
- B. switch out, continue compressions, and review protocol later
- C. call it to the partner's attention and correct the problem right then
- D. ask the partner to show a current CPR card

Standard precautions indicate the use of \_\_\_\_\_ technique to remove items from isolation.

- A. sterile
- B. transfer
- C. dust-proof
- D. double bag

Which of the following contributes to a patient's risk of falling?

- A. reduced vision
- B. antibiotic use
- C. a talkative or noisy roommate
- D. too many visitors

The healthcare provider would suspect dehydration if the

- A. patient's lips are dry
- B. patient voids frequently
- C. patient's urine is straw colored
- D. patient is hungry