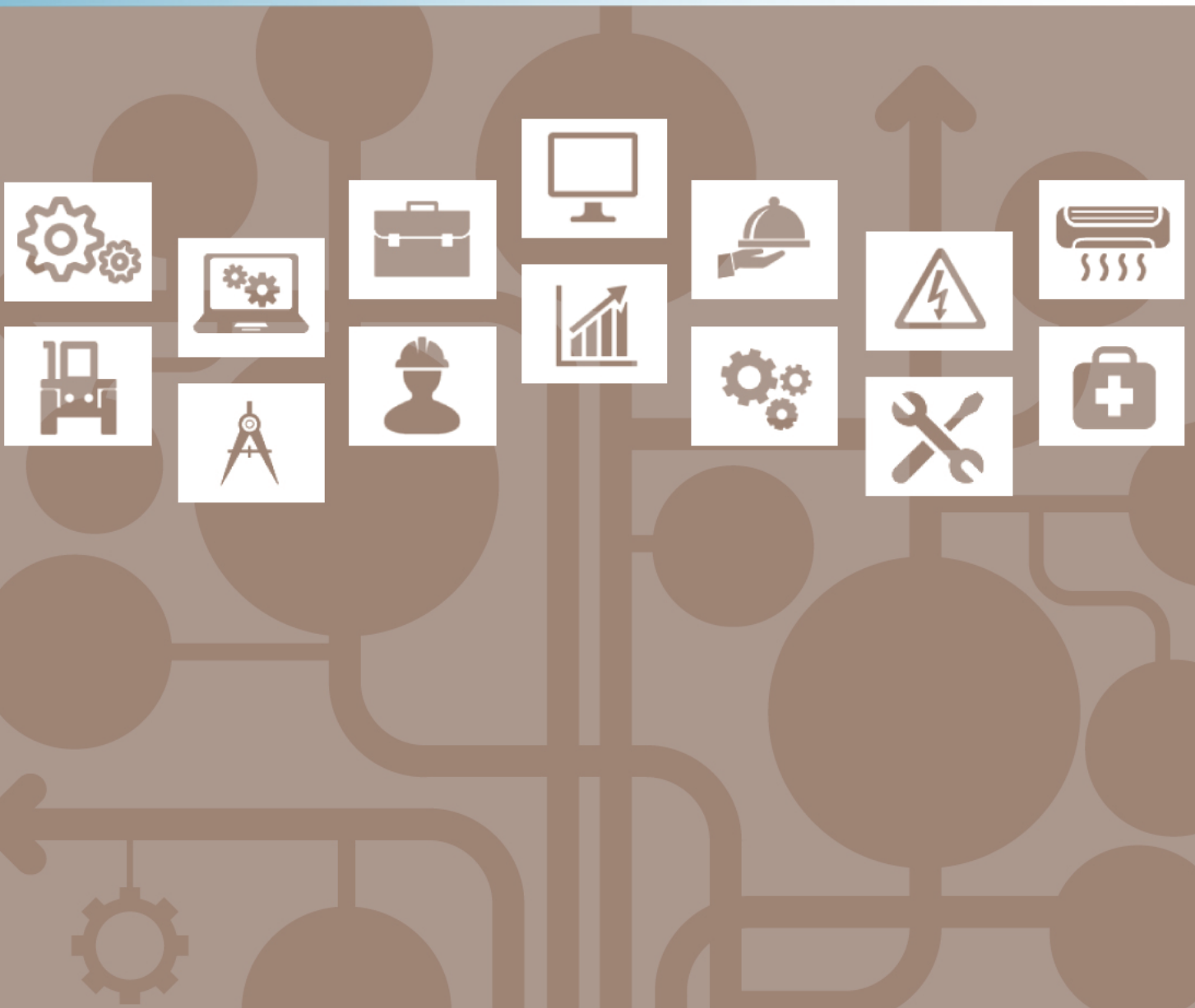


Entry Level Assessment Blueprint

Cabinetmaking



Specific Competencies and Skills Tested in this Assessment:

Safety

- Apply shop and personal safety rules and procedures, including appropriate personal protective equipment (PPE)
- Identify minor first aid treatment procedures
- Apply fire and electrical safety rules and procedures
- Identify MSDS related issues and information

Design and Layout

- Interpret blueprints and specifications
- Prepare and interpret shop drawings/rough sketches
- Prepare or interpret detailed drawings
- Prepare a cut list or bill of material
- Identify and meet industry standards
- Identify types of joints and their uses

Estimating and Measuring

- Read scales and measurements
- Calculate quantities
- Estimate labor and material costs

Hand and Portable Power Tools

- Identify or demonstrate proper use and function of portable power cutting tools
- Identify or demonstrate proper use and function of fastening tools
- Identify or demonstrate proper use and function of portable sanders
- Identify or demonstrate proper use and function of portable routers
- Identify or demonstrate proper use and function of hand tools
- Identify or demonstrate proper use and function of portable drills and drivers



Specific Competencies and Skills continued:

Stationary Saws

- Identify or demonstrate proper use of stationary saws
- Remove and replace stationary saw blades

Boring Machines

- Identify or demonstrate proper use of boring machines
- Select and use appropriate boring machine bits

Milling

- Identify or demonstrate proper use of planers and jointers
- Identify or demonstrate proper use of shapers and stationary routers
- Identify or demonstrate proper use of wood lathes
- Identify or demonstrate proper use of stationary sanders
- Prepare rough stock



Assembly

- Identify and demonstrate methods of case construction
- Identify and demonstrate methods of face frame construction
- Identify and assemble various styles of door construction
- Identify and assemble various types of drawer construction
- Apply laminates, veneers, and countertops
- Explain appropriate use and installation of cabinetry hardware and accessories

Specific Competencies and Skills continued:

Finishing

- Identify and apply various finishing materials
- Safely use and store finishing materials
- Safely use finishing tools and equipment

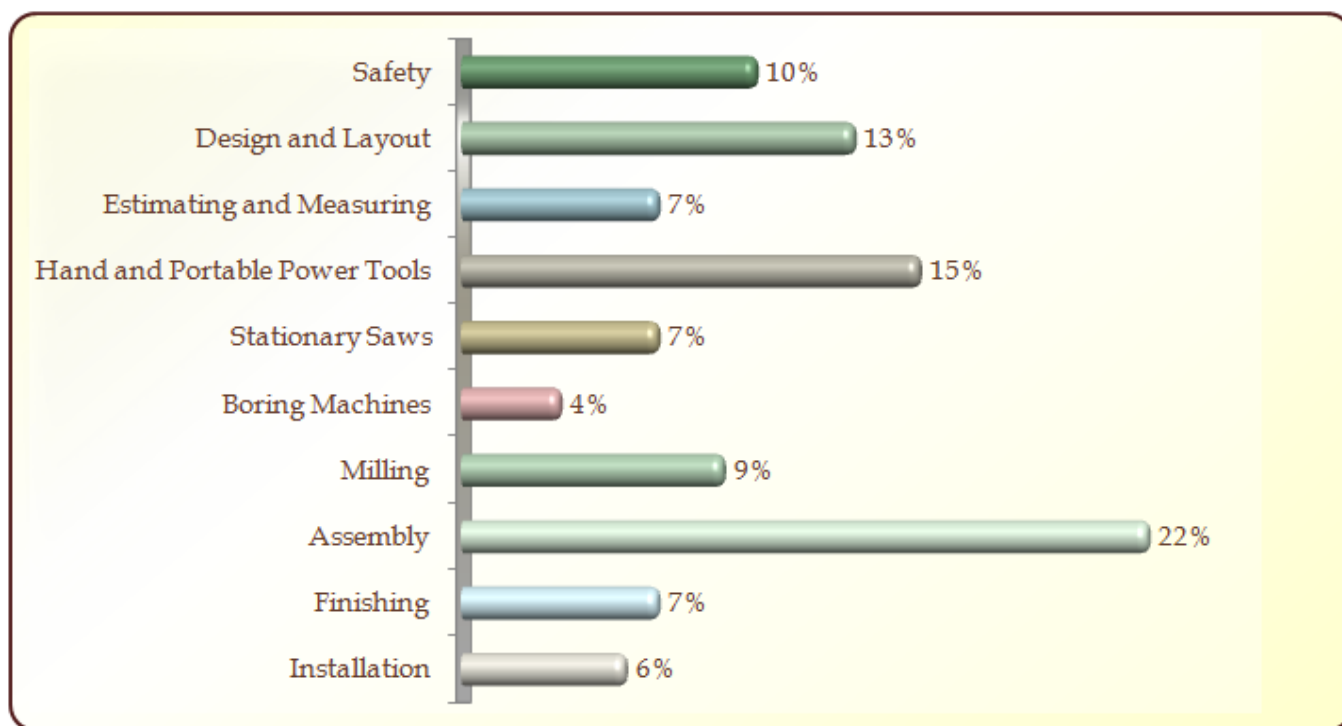
Installation

- Install a base cabinet
- Install a wall cabinet
- Identify industry standards for installation

Written Assessment:

Administration Time: 3 hours

Number of Questions: 156

Areas Covered:

Sample Questions:

To prevent lumber from falling when stacked,

- A. make one large stack
- B. put heavy weights on top of the stack
- C. cross-stack, block, or tier the stack
- D. tie the stack down with rope

A compound miter is cut on a power miter saw by

- A. turning the blade and stock to the correct angle
- B. turning only the arm to the correct angle
- C. tilting the motor unit and turning the arm to the correct angles
- D. tilting only the motor unit

A scale is an instrument with all increments

- A. longer than needed
- B. shortened to proportion
- C. shortened to length of project
- D. longer than length of project

To turn a straight cylinder on the lathe,

- A. use a roughing gouge and a skew chisel
- B. use only a parting tool
- C. size a rough cylinder with a round nose and calipers
- D. use only a round-nose chisel

To receive the bottom, the cabinet end panels are usually

- A. dadoed
- B. grooved
- C. rabbeted
- D. splined

Performance Assessment:

Administration Time: 3 hours and 20 minutes

Number of Jobs: 3

Areas Covered:

24% **Develop a Cut List**

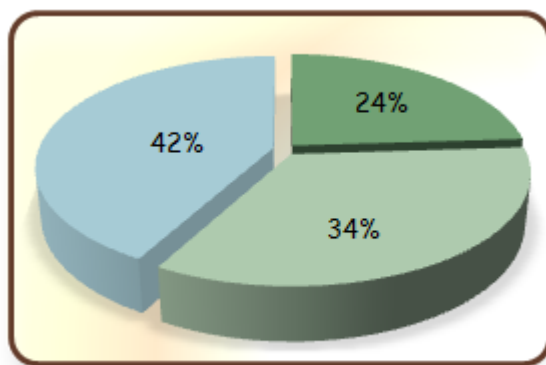
Rail A, B, and C, stiles, drawer face, drawer box sides, drawer box front and back, drawer bottom, and time to complete job 1.

34% **Lay Out, Cut, and Assemble Face Frame**

Planning (use of materials), selection and use of tools/equipment, mitered biscuit joint, pocket screw, mortise and tenon, dowel pin, width of completed project, height of completed project, rail spacing of completed project, diagonal dimensions of completed project, and time to complete job 2.

42% **Lay Out and Assemble One Drawer**

Planning (use of materials), selection and use of tools/equipment, hand operations, cutting and shaping, drawer box width of completed project, height of completed project, depth of completed project, drawer box length of completed project, diagonal dimensions of completed project, laminate of completed project, overall appearance of completed project, and time to complete job 3.



Sample Job: Develop a Cut List

Maximum Time: 20 minutes

Participant Activity: The participant is to use the shop drawings provided as the source of all dimensions and information, and complete the cut list.

