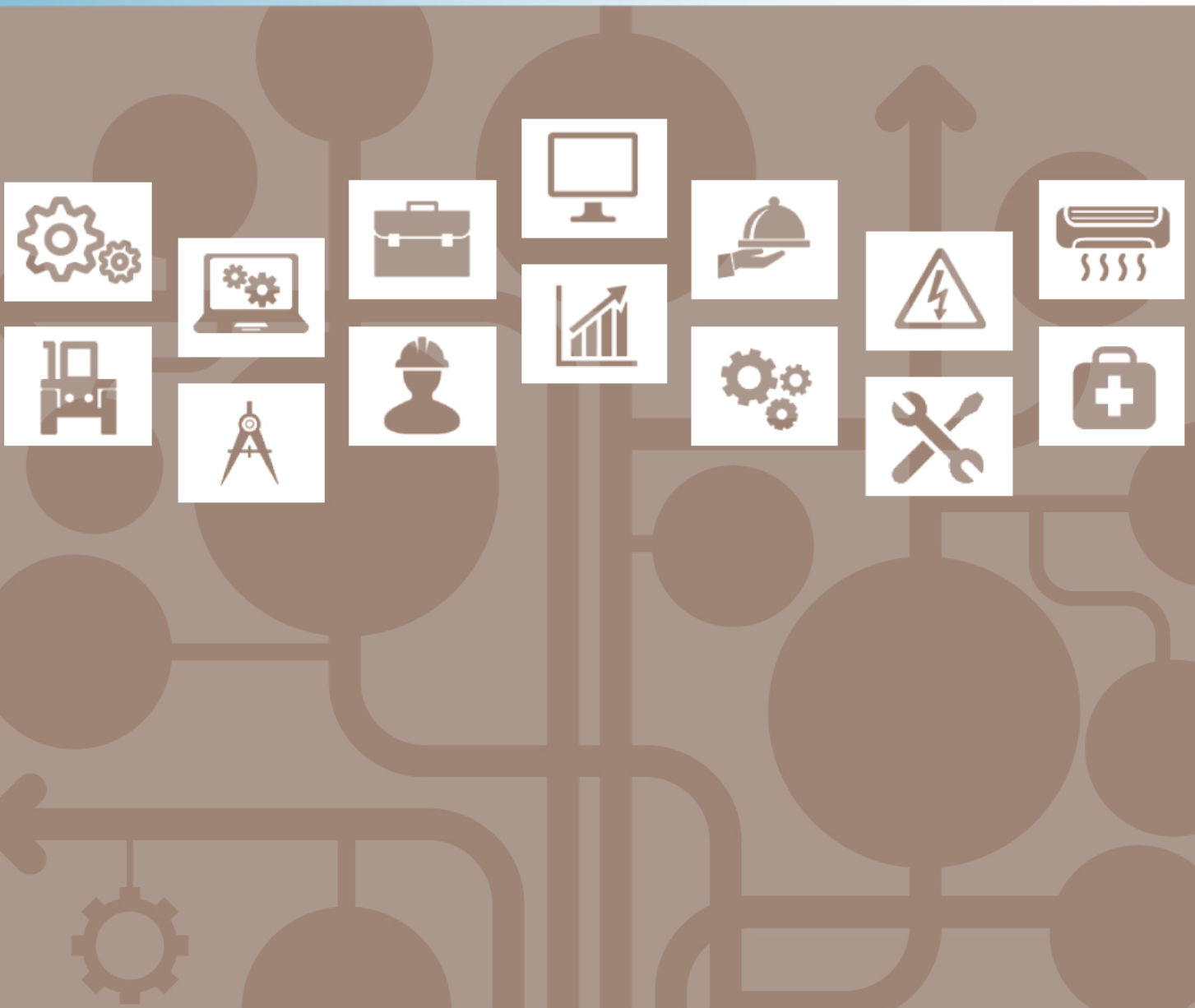


Entry Level Assessment Blueprint

Technical Theater



Specific Competencies and Skills Tested in this Assessment:

Understanding Technical Theater

- Perform the duties associated with broad content in technical theater
- Demonstrate knowledge of the sequence of stage production
- Understand and apply the basic mathematical concepts that apply to technical theater duties
- Understand and observe all safety procedures required in technical theater

Costuming/Make-up and Hair

- Perform basic hand and machine stitching
- Take measurements and perform fittings
- Label costumes, accessories and shoes
- Organize accessory bags and wardrobe racks
- Set-up and organize a quick change booth
- Apply/create a character make-up design for three to five actors for a performance
- Use basic make-up techniques in performance
- Identify and use costume and make-up resources including shops and suppliers
- Create a list of the range of fabric and appropriate applications for use for costume construction
- Perform basic costume maintenance including laundry and repairs
- Prepare a wardrobe plot for each character in a script
- List the basic hair and wig requirements for a show from an examination of the script
- Create and use budgets for costume, make-up, and hair expenditures

Scenic and Prop Construction

- Identify the common components of scenery construction
- Build standard scenery including platform, bracking, flat, and rails
- Measure and work in scale from a ground plan or working drawing
- Read construction plans (e.g., elevations and ground plans)
- Create technical drawings
- Create a cut list for scenic constructions
- Lay out the set placement on stage
- Spike scenic units in the performance space
- Use bearing loads in platform construction
- Scenic painting materials, methods, and processes
- Use basic shop math for measuring

Specific Competencies and Skills continued:

- Follow and enforce all safety procedures required in carpentry work
- Create and use scenic budgets
- Use basic theater rigging techniques and rigging theory

Electrics

- Identify the basic types and components of lighting instruments
- Hang and focus lighting equipment
- Change lamps and gels in standard lighting equipment
- Circuit and patch lighting equipment
- Read lighting plots and lighting paperwork
- Use lighting equipment templates to draw lighting symbols on a hang plot
- Demonstrate knowledge of basic color temperature and color theory
- Identify electrics rigging and lighting positions in the theater
- Operate/program/maintain lighting equipment including spotlights, light boards, etc.
- Use math and basic electrical formulas for stage electricians
- Follow and enforce all safety procedures required in electrics work
- Create and use electrics budget

Properties

- Create properties paperwork and running sheets from an existing script
- Lay out and label a prop table
- Construct and repair basic props using a variety of materials and skills
- Identify techniques for constructing props including paper mache, foam, and other materials
- Demonstrate knowledge of prop safety construction and use
- Create and use properties budget

Running Crews

- Follow cues from headset and cue lights
- Read cue sheets and run show accordingly
- Understand and use rigging systems and operations
- Discuss and outline the roles of various crew positions
- Strike organization and recycling
- Outline in discussion or writing the procedures for deck safety
- Walk the stage area to trouble shoot for safety issues

Specific Competencies and Skills continued:

Stage Management

- Create a timeline and flow chart to demonstrate the rehearsal and production process
- Create a prompt book to be used in the production of a theater event
- Create call sheets and scene breakdown paperwork to be used in the production of a theater event
- Direct the various crews in running rehearsals and performances
- Create prop running paperwork in conjunction with the prop crew
- Generate rehearsal and show reports
- Demonstrate knowledge of communication methods for serving as the liaison
- Generate rehearsal schedules in conjunction with the director
- Create and stock a basic stage management kit
- Tape out a rehearsal room by reading drawings and ground plans
- Supervise the deck crew in glow taping stage set and set-up of safety lights
- Organize and run an audition
- Run a dry technical rehearsal
- Create and use production budgets

Sound

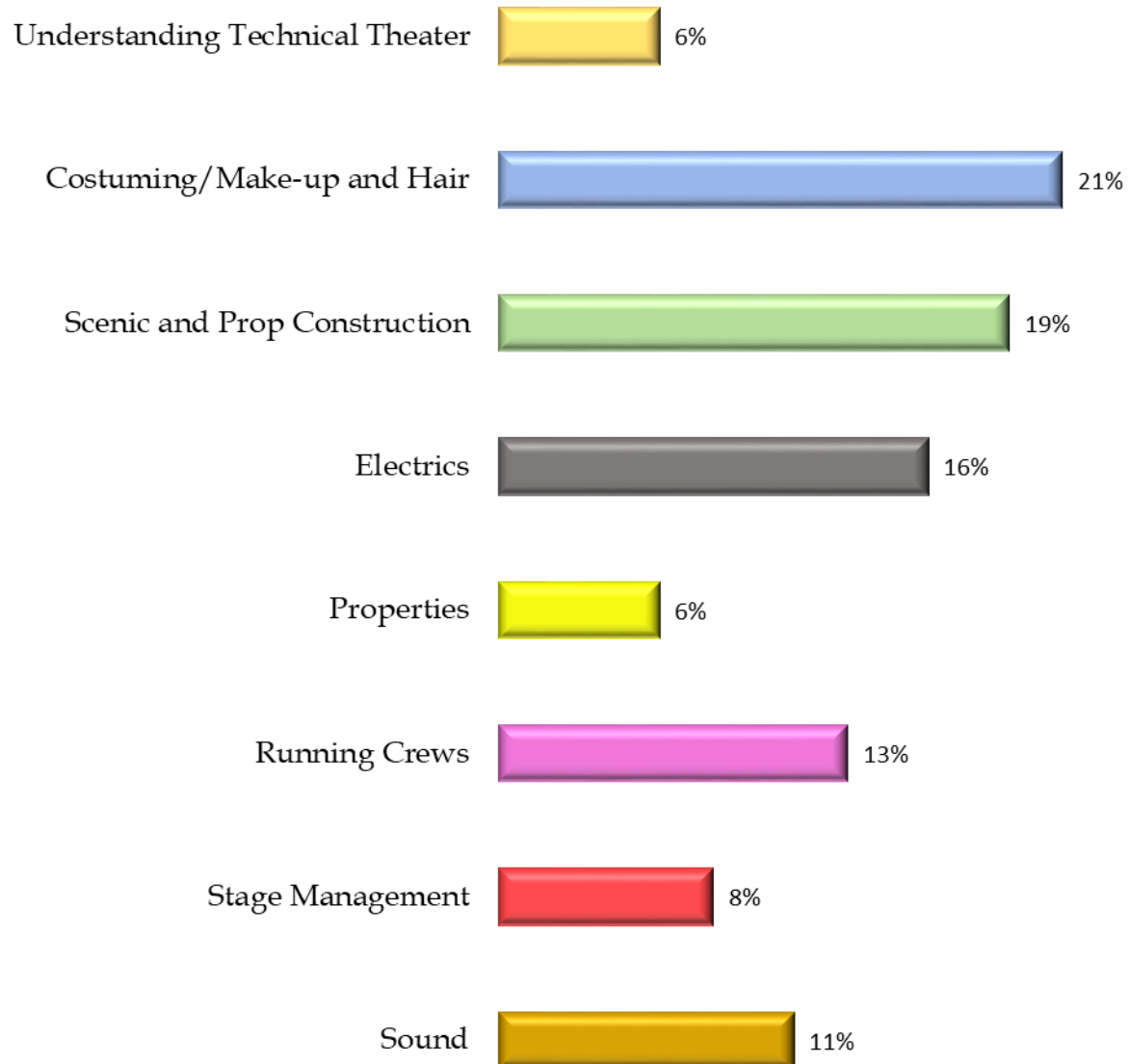
- Analyze script to create a cue list for sound
- Identify common sound equipment and components
- Microphone technique and positioning
- Assemble sound system to enhance appropriate sound mix and balance
- Use and edit sound software
- Comply with sound safety issues
- Calculate sound budget
- Perform signal math using sound theory

Written Assessment:

Administration Time: 3 hours

Number of Questions: 229

Areas Covered:



Sample Questions:

Which of the following stage configurations has an audience on three sides?

- A. thrust
- B. proscenium
- C. in the round
- D. amphitheater

Where is the proper place to measure the size of head?

- A. right above the eyebrows
- B. around the head just above the ears
- C. around the head over the ears
- D. from the hairline on the forehead to the nape of the neck

Stairs that run from the stage into the wings are called

- A. escape stairs
- B. firs stairs
- C. grand staircases
- D. blank stairs

Gel colors are usually described as

- A. hot or cold
- B. tint or shade
- C. warm or cool
- D. soft or loud

Stage safety suggests that hard hats are to be worn by the

- A. audio crew
- B. stage managers
- C. rigging crew
- D. running crew

Performance Assessment:

Number of Jobs: 6

Areas Covered:

Costume Performance Assessment

Administration Time: 3 hours
Number of Jobs: 1
Job Description: Pattern and sew an apron

Make-up and Hair Performance Assessment

Administration Time: 2 hours
Number of Jobs: 1
Job Description: Make-up and hair for a period styling

Construction Performance Assessment

Administration Time: 2 hours
Number of Jobs: 1
Job Description: Construct a 2'x4' fabric covered theatrical style flat

Electrics Performance Assessment

Administration Time: 2 hours
Number of Jobs: 1
Job Description: Setup, hang, cable and focus three unit light plot

Sound Performance Assessment

Administration Time: 2 hours
Number of Jobs: 1
Job Description: Setup sound system

Stage Management Performance Assessment

Number of Jobs: 2
Job One Description: Tape out a ground plan
Administration Time: 1 hour
Job Two Description: Create a mini-prompt book with blocking and cue annotation
Administration Time: 1 hour, 30 minutes