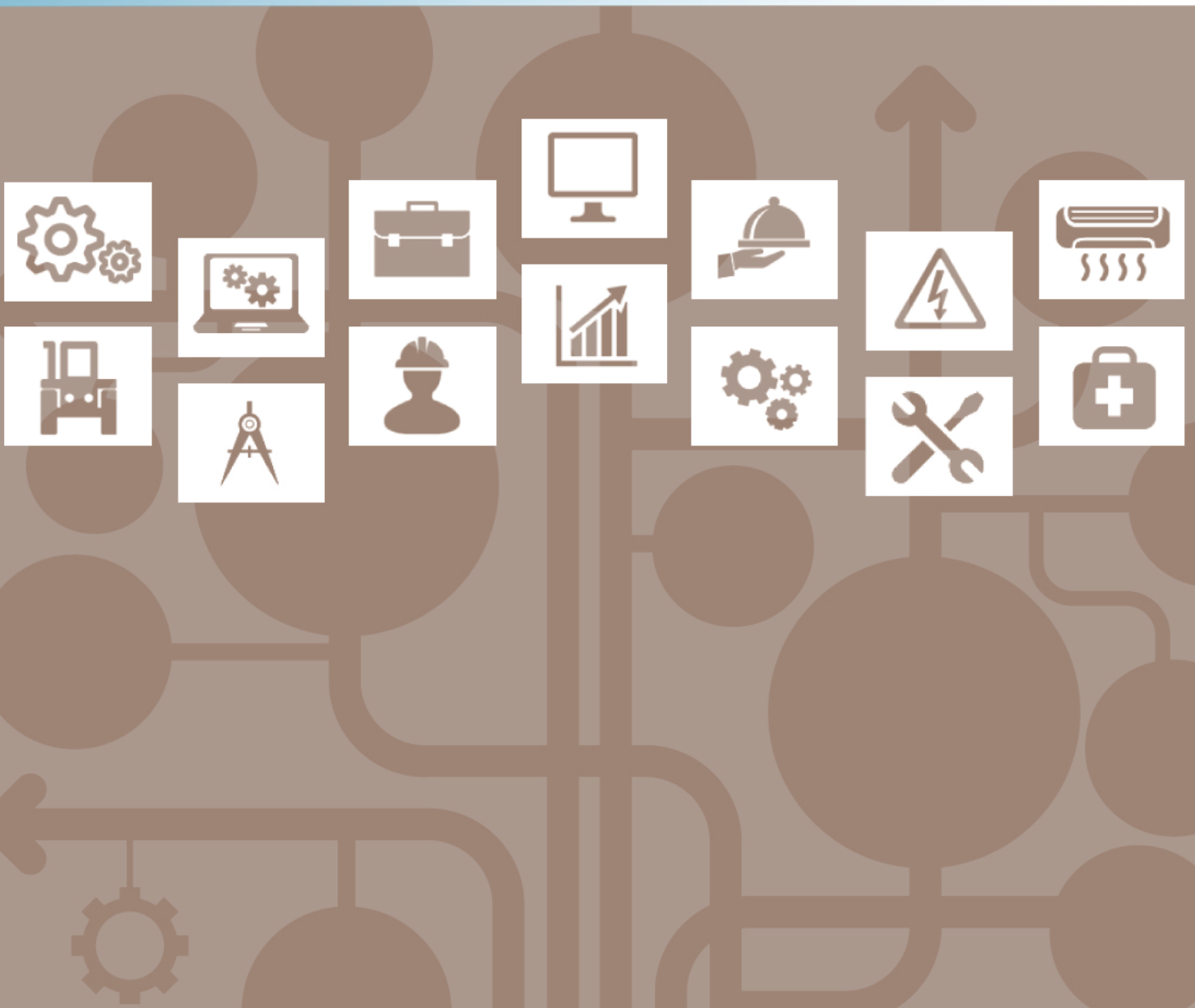


Entry Level Assessment Blueprint

Cabinetmaking



Specific Competencies and Skills Tested in this Assessment:

Safety

- Apply shop and personal safety rules and procedures, including appropriate PPEs
- Identify minor first aid treatment procedures
- Recall fire and electrical safety rules and procedures
- Identify SDS-related issues and information

Design and Layout

- Interpret blueprints and specifications to industry standards
- Interpret shop drawings/rough sketches
- Interpret detailed drawings
- Interpret a cut list or bill of material
- Identify types of joints and their uses
- Estimate time and materials

Major Woods and Materials

- Identify benefits of major woods and wood products
- Demonstrate understanding of characteristics of different woods
- Compare and contrast sheet good materials

Hand and Portable Power Tools

- Identify proper use portable power cutting tools
- Identify proper use of fastening tools
- Identify proper use of portable sanders
- Identify proper use of portable routers
- Identify proper use of hand tools
- Identify proper use of portable drills and drivers



Specific Competencies and Skills continued:

Stationary Power Equipment

- Articulate proper use of stationary saws
- Demonstrate understanding of how to remove and replace stationary saw blades
- Identify proper use of boring machines and tools
- Select and use appropriate boring bits
- Identify proper use of planers and joiners
- Identify proper use of shapers and stationary routers
- Identify proper use of stationary sanders
- Prepare stock

Assembly

- Identify types and uses of different clamps
- Identify methods of case construction
- Identify various types of joinery
- Identify methods of face frame construction
- Identify various styles of door construction
- Identify various types of drawer construction
- Identify types and uses of hardware and accessories
- Identify and use various fasteners

Finishing

- Identify types and uses of finishing materials
- Recall safe use and storage of finishing materials
- Recall safe use of finishing tools and equipment

Installation

- Determine how to install a base cabinet
- Determine how to install a wall cabinet
- Identify industry standards for installation

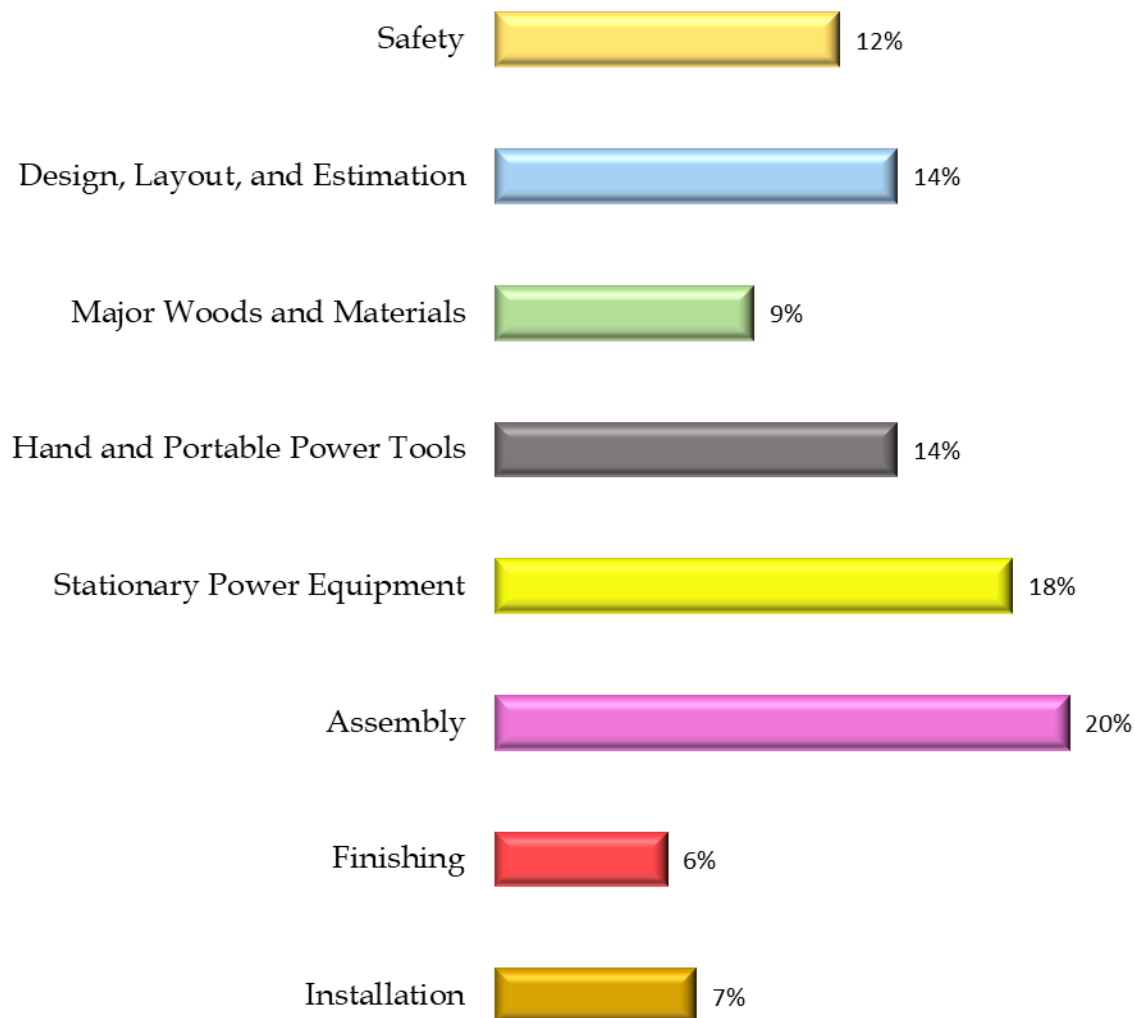


Written Assessment:

Administration Time: 3 hours

Number of Questions: 162

Areas Covered:



Sample Questions:

Proper PPE practices require that workers wear _____ while operating all machinery.

- A. gloves
- B. eye protection
- C. work aprons
- D. head protection

A scale is an instrument with all increments

- A. lengthened to proportion
- B. shortened to proportion
- C. shortened to length of project
- D. longer than length of project

It is best to make up a cut list before estimating the

- A. labor cost
- B. material cost
- C. installation time
- D. completion date

The sheets applied over the core material of plywood panel products are called

- A. over sheets
- B. face grains
- C. face veneers
- D. panels

The pneumatic stapler is operated by

- A. compressed air
- B. electricity
- C. spring tension
- D. hydraulic pressure

A common cause of band saw blade breakage is

- A. cutting stock that is too thick
- B. cutten green lumber
- C. applying too much tension to the blade
- D. using a feed rate that is too fast

The standard height of a kitchen base cabinet, including the counter top, is

- A. 30 inches
- B. 32 inches
- C. 34 inches
- D. 36 inches

Sample Questions (Continued):

When using metal drawer guides, _____ should be allowed when determining the drawer width.

- A. 3/4 inch
- B. 1 inch
- C. 1-1/4 inches
- D. 1-1/2 inches

What is the best technique for applying stain?

- A. work in strong natural light
- B. mix stains to create unique colors
- C. wipe surfaces with solvent-soaked rag
- D. work on a horizontal surface

After fastening the second wall cabinet securely to the wall,

- A. replace the doors if they were removed
- B. set the next wall cabinet up to install
- C. clamp and fasten the cabinets together
- D. set the base cabinets in to install

Performance Assessment:

Administration Time: 3 hours

Number of Jobs: 3

Areas Covered:

24% **Develop a Cut List**

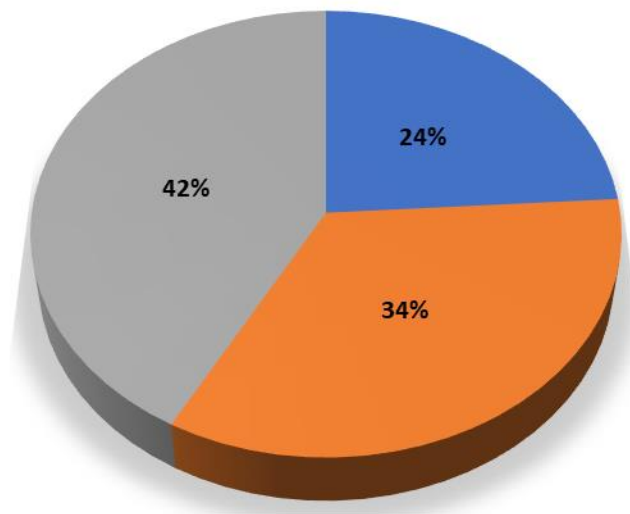
Participant will go to designated station, use the shop drawings provided to complete a cut list, and turn the cut list in to the evaluator. Evaluator will provide a Master Cut List which participant will use to proceed to other jobs.

34% **Lay Out, Cut, and Assemble Face Frame**

Participant will refer to the drawings provided to lay out, cut, and assemble a face frame, leave the work area clean and orderly, and notify evaluator when finished.

42% **Lay Out and Assemble One Drawer**

Participant will refer to the drawings provided, lay out and build a drawer, apply wood with edge treatment to draw front, install drawer pull, leave work area clean and orderly, notify evaluator when finished, and submit Master Cut List and other written materials to the evaluator.



Sample Job: Develop a Cut List

Maximum Time: 15 minutes

Participant Activity: The participant will go to the designated station, use the shop drawings provided as the source of all dimensions and information to create a Cut List, turn the Cut List in to the evaluator and use the Master Cut List the evaluator will provide to proceed to other jobs.

