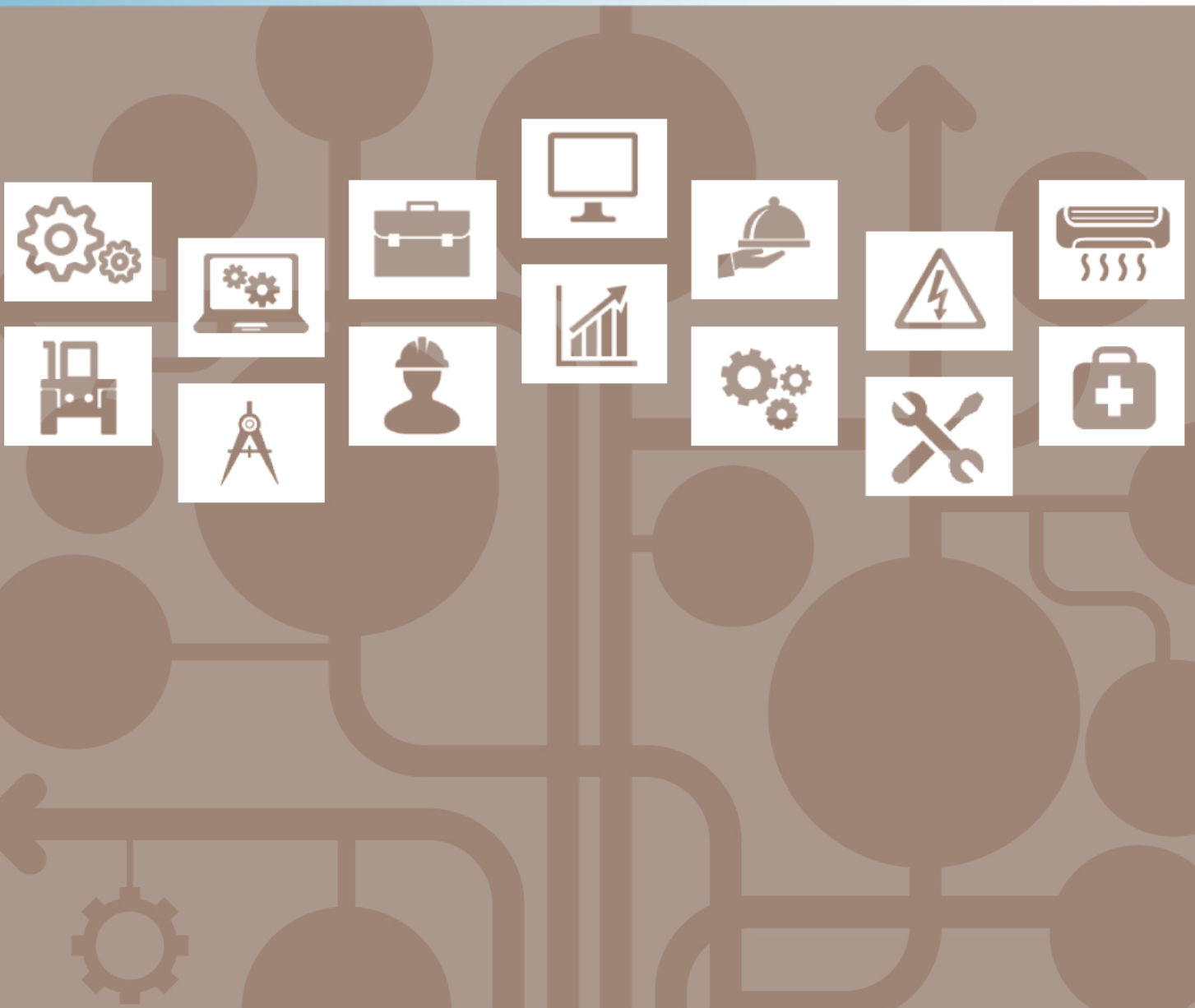


Entry Level Assessment Blueprint

Criminal Justice



Specific Competencies and Skills Tested in this Assessment

Crime Scene Management

- Exhibit understanding of proper evidence collection practices
- Exhibit knowledge of scientific principles involved in crime scene management including proper evidence preservation practices
- Exhibit understanding of initial crime scene management
- Identify and perform crime scene processing (e.g., crime scene search patterns, measurement, photography, latent print techniques)



Use of Force

- Identify and understand the use of force options
- Exhibit knowledge and understanding of civil and criminal liability
- Identify relevant case law that applies to the use of force
- Define the difference between less-than-lethal force and deadly force
- Identify less-than-lethal weapons and techniques
- Describe knowledge of basic firearm safety

Criminal Law and Procedures

- Display knowledge of significant case laws (e.g., Terry v. Ohio, Carroll v. United States)
- Identify key constitutional amendments (e.g., search and seizure)
- Display knowledge of branches of government
- Describe search and arrest procedures (e.g., probable cause)
- Define types, categories, and classes of crimes
- Exhibit knowledge of differences between criminal and civil law

Court System

- Describe the difference between a search warrant and an arrest warrant
- Display understanding of the different levels of federal courts
- Describe appropriate professional courtroom testimony and demeanor
- Exhibit knowledge of trial and court procedures (e.g., courtroom terminology, personnel)
- Exhibit knowledge of the juvenile justice system

Criminal Justice (continued)

Health and Safety

- Exhibit knowledge of universal precautions
- Demonstrate knowledge of CPR, first aid, and emergency medical care
- Identify hazardous materials, proper response, and scene management

Police Concepts and Skills

- Describe proper traffic stop techniques
- Describe proper handcuffing techniques
- Identify appropriate search procedures for persons, structures, and vehicles
- Identify different types of patrol procedures and techniques
- Display knowledge of different types of investigation (e.g., property crimes)
- Exhibit knowledge of proper interview and interrogation techniques
- Describe knowledge of fingerprinting and booking procedures
- Describe scene safety techniques for officer response (e.g., domestic dispute)
- Describe scene safety techniques at motor vehicle crash sites
- Describe characteristics of individuals operating a vehicle while impaired
- Display knowledge of professional ethics and conduct
- Exhibit knowledge of the history of policing



Corrections

- Identify corrections concepts, methods, and history (e.g., recidivism)
- Identify various types, security levels, and classifications of correctional institutions
- Understand methods and history of capital punishment
- Display knowledge of intake procedures
- Understand early release and diversionary programs (e.g., parole, probation)

Criminal Justice (continued)

Communication

- Exhibit knowledge of accurate report writing and field notes
- Display knowledge of interpersonal communication techniques (e.g., non-verbal, verbal)
- Demonstrate knowledge of proper de-escalation techniques
- Exhibit knowledge of effective community policing
- Display familiarity with law enforcement computer databases
- Exhibit knowledge of emerging police technology and social media
- Display knowledge of radio usage and procedures
- Describe the role of incident command (e.g., NIMS, transfer of command)

Security: National, International, and Private

- Exhibit awareness of sources and types of domestic and international terrorism
- Exhibit knowledge of private security and property protection
- Identify and understand different types of criminal organizations

Understand and Work with Special Populations

- Display understanding of cultural diversity (e.g., racial profiling)
- Exhibit appropriate methods of interacting with persons with mental health disabilities
- Identify crisis resources for persons with unique needs (e.g., victim advocates)

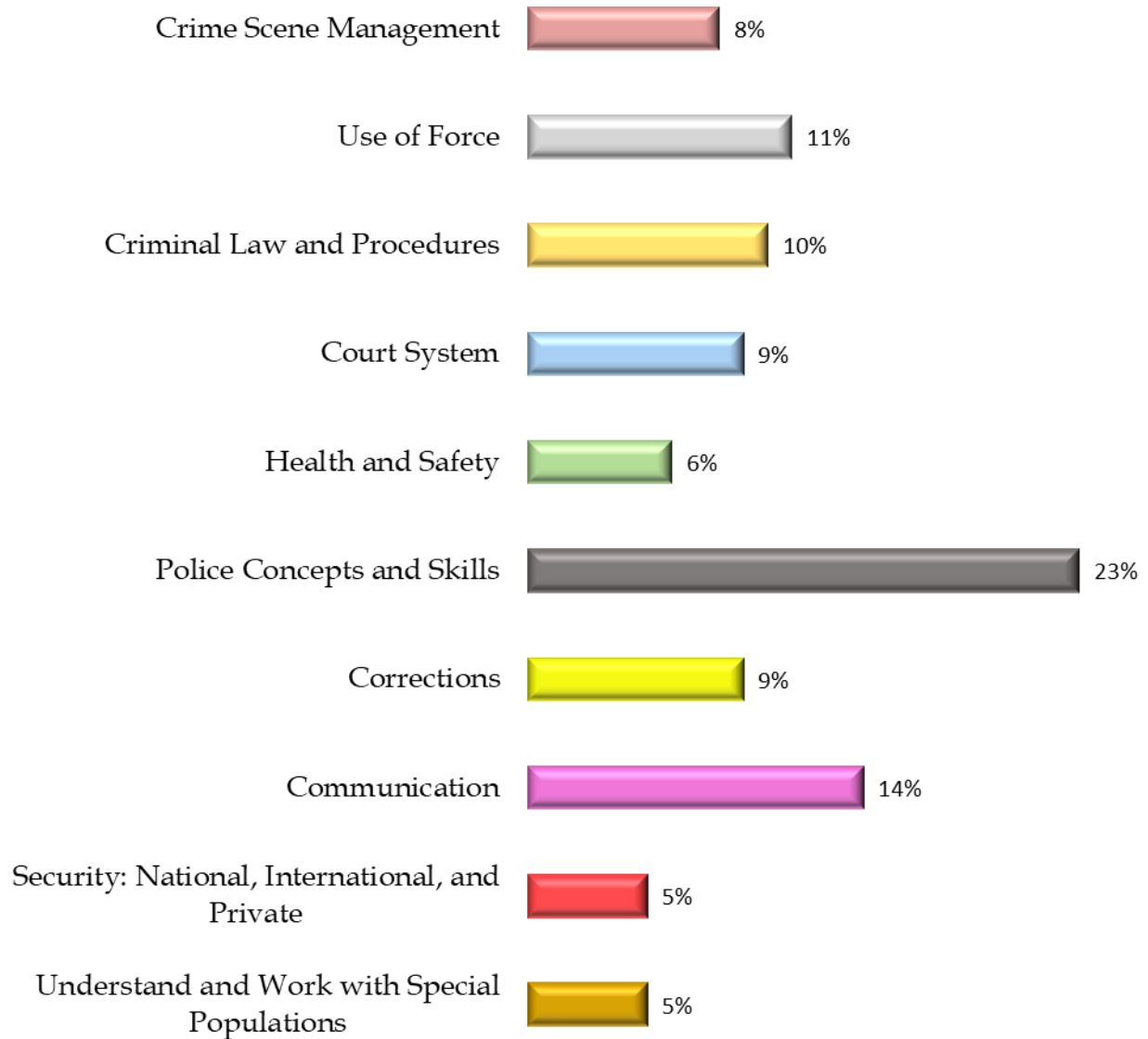


Written Assessment:

Administration Time: 3 hours

Number of Questions: 195

Areas Covered:



Sample Questions:

Wet evidence should be packaged in a paper bag because

- A. it prevents the evidence from becoming moldy
- B. it is less expensive than other materials
- C. it allows for growth of microorganisms
- D. paper is easier to store

A compliance weapon that uses a wire to transmit the control is called

- A. pepper spray
- B. a TASER
- C. a stun gun
- D. an expandable baton

Protection against double jeopardy is found in which amendment?

- A. Fourth
- B. Fifth
- C. Sixth
- D. Eighth

Courts that have the authority to review decisions of a lower court are known as _____ courts.

- A. appellate
- B. magistrate
- C. district
- D. parliamentary

Anaphylaxis significantly impacts the _____ system.

- A. respiratory
- B. nervous
- C. musculoskeletal
- D. endocrine

An officer should place handcuffs on an arrestee before

- A. reading Miranda warnings
- B. placing them in the patrol unit
- C. issuing an arrest warrant
- D. field sobriety tests

What are the three levels of prison classifications?

- A. minimum, low, and maximum
- B. minimum, medium, and maximum
- C. pre-release, low, and medium
- D. restricted, medium, and maximum



Sample Questions (continued)

A recognized program aimed at neighborhood crime prevention is known as

- A. community policing
- B. juvenile justice
- C. internal affairs
- D. homeland security

Most employers of private security officers prefer persons with prior experience and training as _____ officers.

- A. parole
- B. probation
- C. immigration
- D. law enforcement

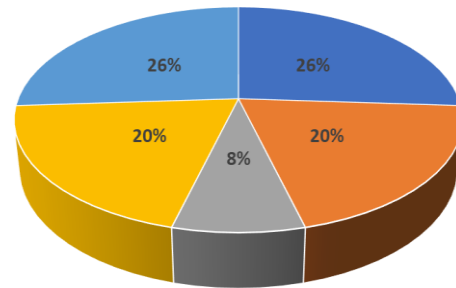
If an individual is exhibiting signs and symptoms of psychosis, an officer must immediately request

- A. a victim advocate
- B. a chief or sheriff
- C. paramedics or EMS
- D. agency-directed resources

Performance Assessment:

Administration Time: 2 hours and 50 minutes

Number of Jobs: 5



Areas Covered:

- 26% **Crime Scene Investigation**
Participant will properly prepare and search for evidence, measure the location of evidence, use correct photography techniques, correctly lift and label fingerprints, package a wet item of evidence, package additional evidence, and maintain crime scene integrity.
- 20% **Arrest**
Participant will properly complete correct arrest, place handcuffs, complete a search, and complete an arrest report with correct grammar and spelling.
- 8% **Visual and Auditory Observation Test**
Participant will answer a series of questions from memory about what is observed and heard at a simulated crime scene, using correct spelling, grammar, and legible writing.
- 20% **Traffic Stop and Citation Issue**
Participant will correctly conduct a low-risk traffic stop, including reporting to dispatch, issuing a traffic citation, and maintaining proper safety.
- 26% **Sobriety Testing**
Participant will conduct three sobriety tests, including the Horizontal Gaze Nystagmus, the Walk and Turn, and the One Leg Stand.

- Sample Job:** Visual and Auditory Observation Memory Test
- Maximum Time:** 15 minutes
- Participant Activity:** Participant will listen to the scenario description and briefly observe the simulated crime scene. Participant will then complete a legible worksheet with a series of questions answered from memory, using proper spelling and grammar.